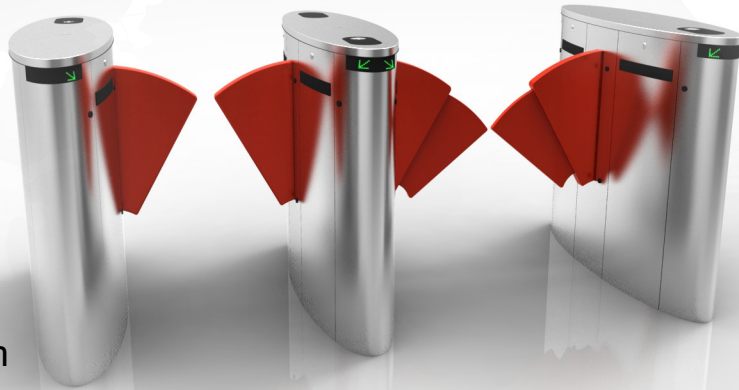


BARRIER GATE

Half Height Flap Barrier System



Model: NW-FP-07

Size: 1400 x 320 x 980 mm

FEATURES

- Fault self-recovery and corrective measure ability, convenient for maintenance and adjustment
- Human-oriented model indication function, real time displaying, improve the passing rate
- Automatic counting indicating passenger's number (optional)
- Resetting automatically, auto cancel the pass through and closed barrier in case there's no pass through the barrier, in a pre-set timing
- Fail-Safe function with UPS to meet Fire-safety regulation
- Break-in, tail-gate, over-pass and reverse alert function to maintain safe and effective passage
- Standard input/output port to integrate with most access control systems and able to manage the integrated systems through the remote PC.

Technical specifications

Power voltage	AC220±10%, 50Hz	Drive Voltage	DC24V 5A
Dimension (customised option)	1400 x 320 x 980mm	Communication port	RS485
Operation condition	-15°C ~ +60°C	Structure	Frame or 304 Stainless steel cover
Relative humidity	≤95%, None-condensation	Open direction	Single and Bi-Directional (optional)
Input signal	12v DC level or 12v pulse>100ms	Gate opening & closing time	0.5s
Working current	≤2000mA	IP Degree	IP43
Length of the flap	260mm	Width of Passage	≤900mm
Pass speed	≤30person/minute	Service life	≥3 million times



SMART BUILDING SOLUTION

